

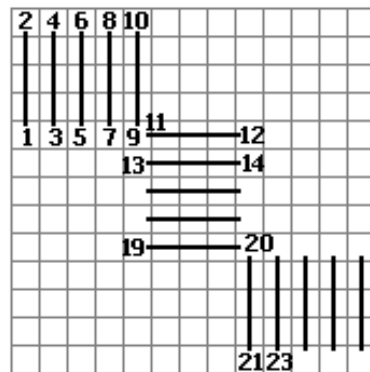
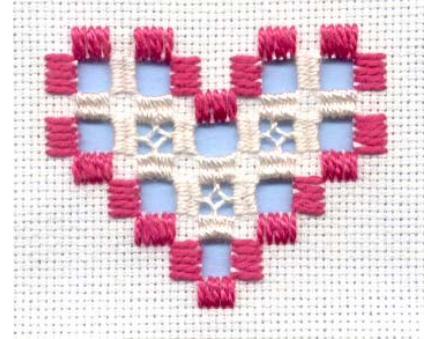
A HARDANGER HEART

Hardanger consists of satin stitch, cutwork and needleweaving.

The pattern for this sample as well as for a heart is on the next page.

The satin stitches are called Kloster Blocks, and are stitched with a heavier thread. They are stitched over 4 threads. Do not carry a thread diagonally and the back of your work will be neater.

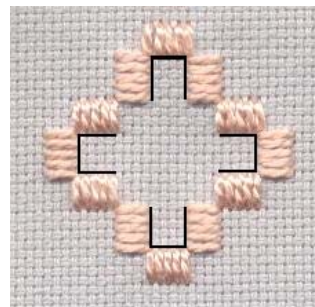
To begin or end a thread, run your thread under at least 5 kloster blocks.



Do not do any cutting until all the kloster blocks are completed. The fabric threads to be cut have the satin stitches or a kloster block surrounding them. In other words, if the fabric is cut, there should be a corresponding kloster block on the other side.

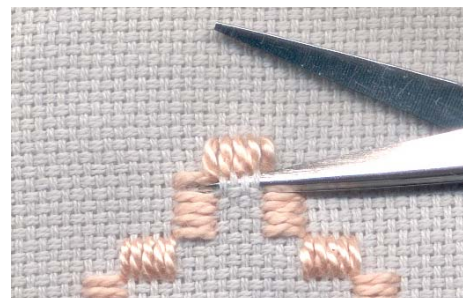


Kloster blocks



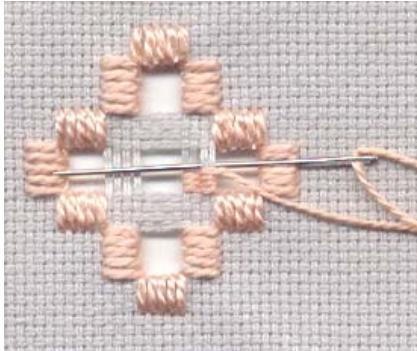
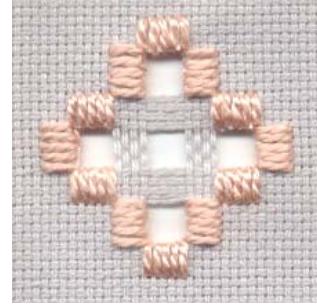
Kloster blocks showing cutting lines

To begin cutting, insert your scissors under the four fabric threads to be cut. Gently push the stitched threads of the kloster block away from your scissors so they do not accidentally get cut.



A HARDANGER HEART

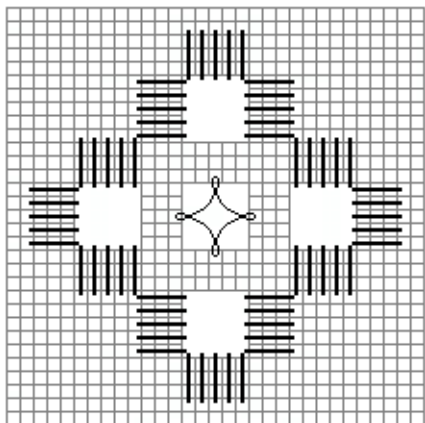
After you have finished cutting the threads, carefully withdraw the threads from the cut area.



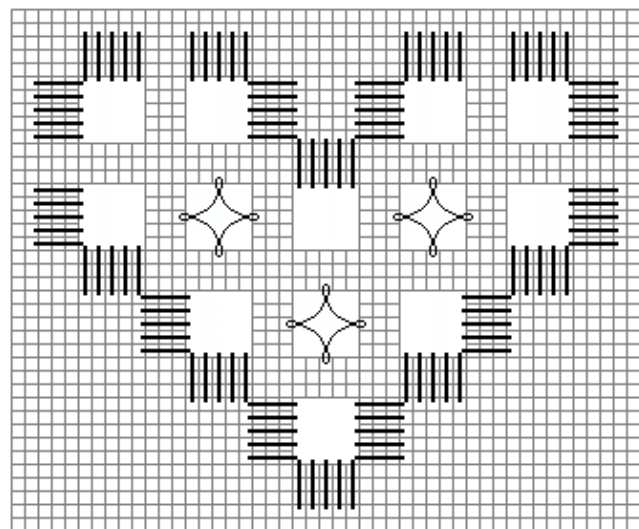
Needleweaving is generally done with a lighter weight of thread. Weave in and out on each spoke. Try to use the same number of stitches.

Dove's eye stitch is one of the many decorative filler stitches used in hardanger.

Dove's eye stitch is started on the last spoke of each section. Needleweave half the spoke. Going around clockwise, bring your needle up in the centre of the needleweaving of the next spoke. Insert your thread under the loop as you travel to the third spoke.



Hardanger Sample



A Hardanger Heart